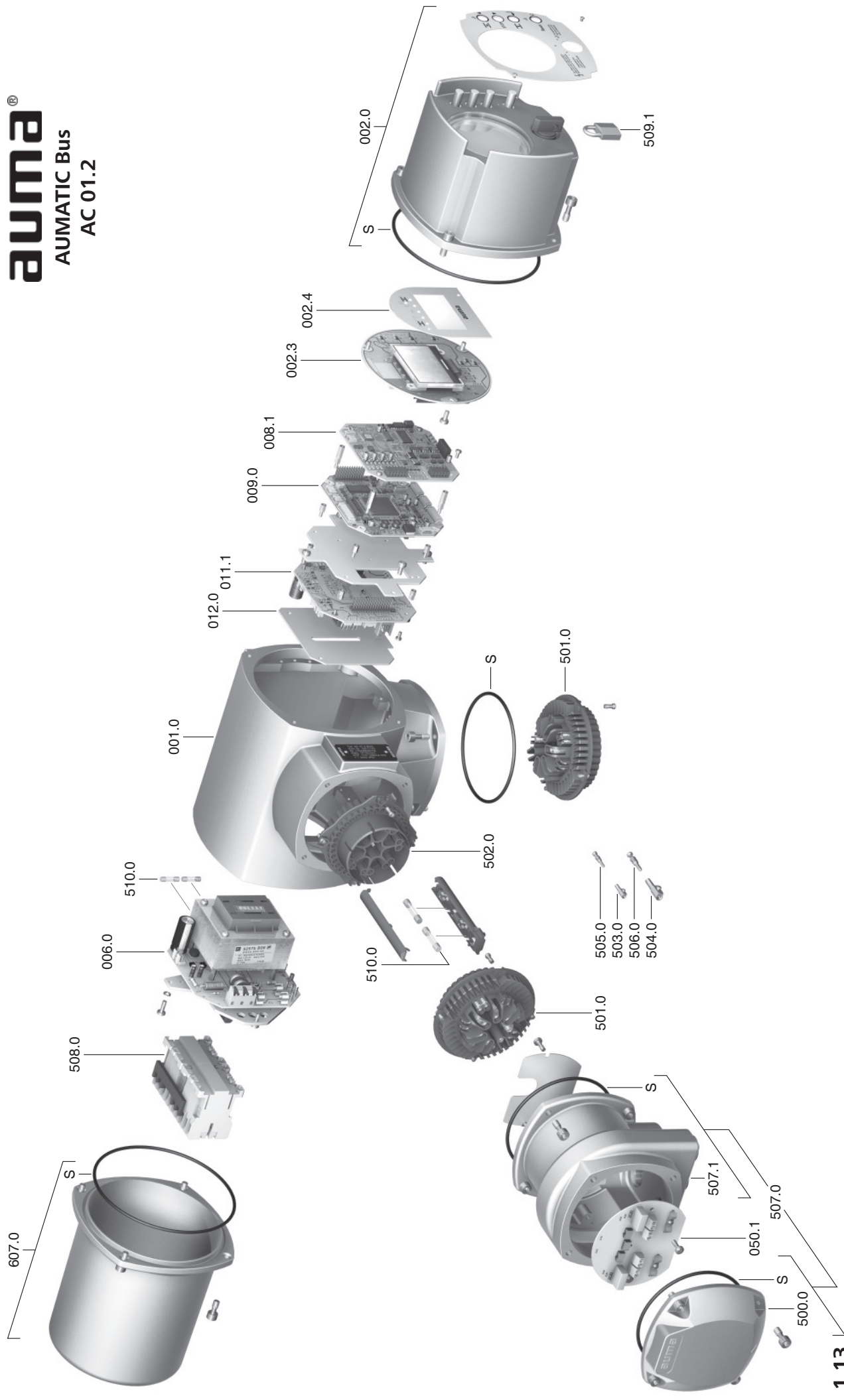


Spare parts list  
**auma**<sup>®</sup>  
 AUMATIC Bus  
 AC 01.2



## Spare parts list AUMATIC

Please state type and commission no. of the device (see name plate) when ordering spare parts. Only original AUMA spare parts should be used. Failure to use original spare parts voids the warranty and exempts AUMA from any liability. Delivered spare parts may slightly vary from the representation.

Ref.No.	Designation	Type
001.0	Housing	sub-assembly
002.0	Local controls	sub-assembly
002.3	Local controls board	sub-assembly
002.4	Face plate for display	
006.0	Power supply i b]h	sub-assembly
008.1	Fieldbus board	
009.0	Logic board	sub-assembly
011.1	Relay board	sub-assembly
012.0	Option board	
050.1	Bus connection board	sub-assembly
500.0	Cover	
501.0	Socket carrier (complete with sockets)	sub-assembly
502.0	Pin carrier without pins	sub-assembly
503.0	Socket for controls	sub-assembly
504.0	Socket for motor	sub-assembly
505.0	Pin for controls	sub-assembly
506.0	Pin for motor	sub-assembly
507.0	Electrical connection for bus without connection board (050.1)	sub-assembly
507.1	Frame ZcfYYWfjW VcbbYVcb	sub-assembly
508.0	Switchgear	sub-assembly
509.1	Padlock	sub-assembly
510.0	Fuse kit	sub-assembly
607.0	Cover	sub-assembly
S	Seal kit	Set